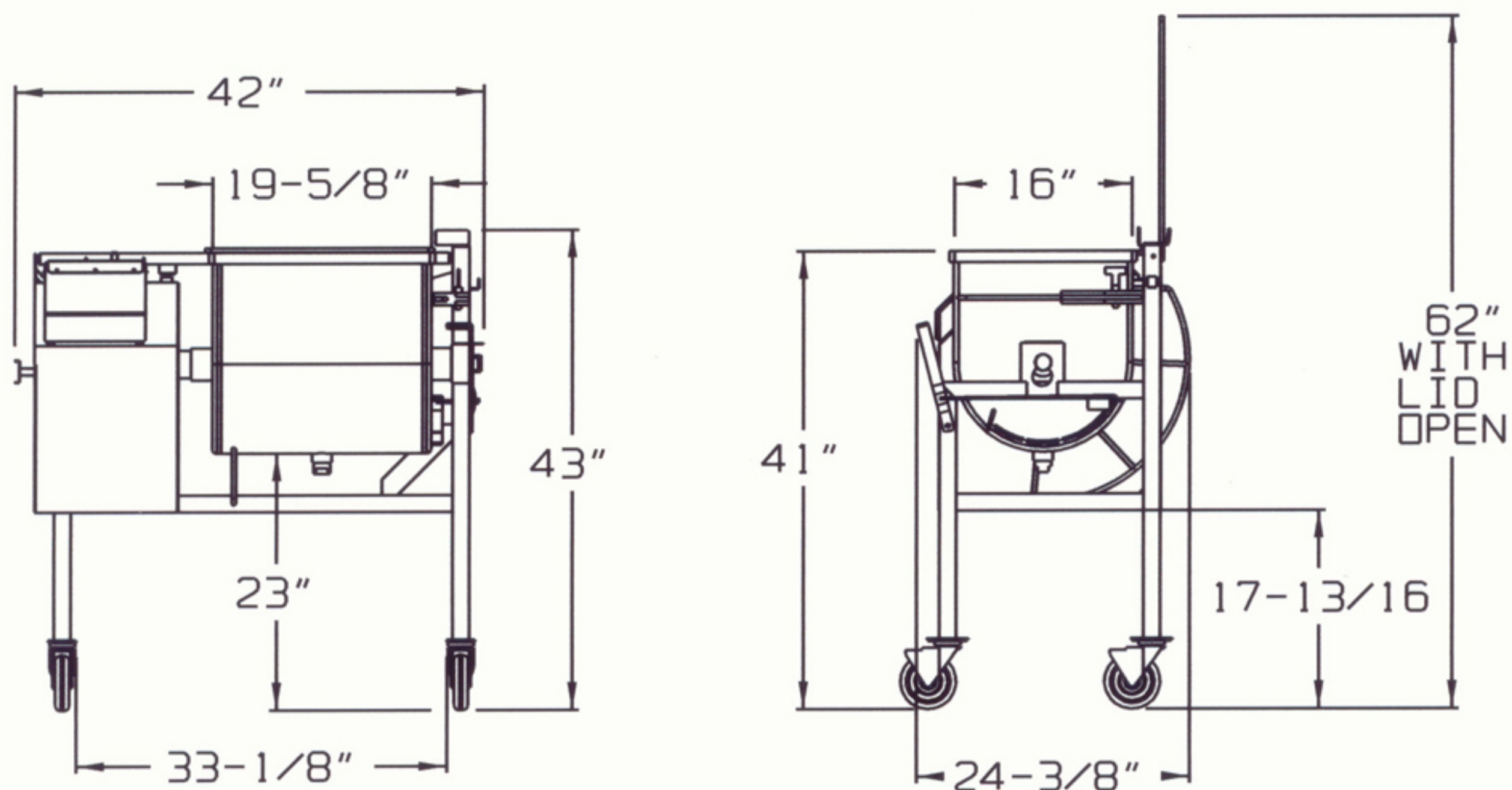


# DANIELS FOOD EQUIPMENT

## DMX and DMX QUAD 100 MIXER



### SPECIFICATIONS

<b>MOTOR DMX:</b>	<b>STANDARD:</b> 3/4 HP, 1 PH, 115 VOLT, 60 Hz, 10.9 AMP <b>OPTIONAL:</b> 3/4 HP, 1 PH, 115,208/230VOLT, 60 Hz, 10.8/5.5/5.4 AMP <b>OPTIONAL:</b> 3/4 HP, 1 PH, 115/230 VOLT, 50 Hz, 11.8/5.9 AMP <b>OPTIONAL:</b> 3/4 HP, 3 PH, 208/230/460 VOLT, 60 Hz, 3.2/2.8/1.4 AMP <b>OPTIONAL:</b> 3/4 HP, 3 PH, 220/380/460 VOLT, 50 Hz, 1.8/1.85/1.15 AMP
<b>MOTOR DMX QUAD:</b>	<b>STANDARD:</b> 1 HP, 1 PHASE, 115 VOLT, 60 Hz, 12.8 AMP <b>OPTIONAL:</b> 1 HP, 1 PHASE, 208/230 VOLT, 60 Hz, 7.1/6.4 AMP <b>OPTIONAL:</b> 1 HP, 3 PHASE, 208/230/460 VOLT, 60 Hz, 4.0/3.6/1.8 AMP <b>OPTIONAL:</b> 1 HP, 1 PHASE, 115/230, VOLT, 50 Hz, 12.8/6.4 AMP
<b>PADDLE RPM:</b>	<b>DMX:</b> 30-3/4 RPM <b>DMX QUAD:</b> INNER 30-3/4 RPM, OUTER 28-3/4 RPM
<b>TIMER:</b>	LED READOUT – HOURS and MINUTES
<b>DIRECTION CONTROL:</b>	FORWARD-STOP-REVERSE
<b>HOPPER CAPACITY:</b>	100-LBS
<b>HOPPER CONSTRUCTION:</b>	12 GA STAINLESS STEEL, 110° DUMPING, REMOVABLE PADDLE, CLEANOUT DRAIN ON BOTTOM, TRANSPARENT COVER WITH SAFETY LOCKOUT.
<b>FRAME:</b>	11 GA STAINLESS STEEL TUBING, OPEN UNDER HOPPER FOR EASY DUMPING, LOCKING SWIVEL CASTERS.
<b>DUMP HEIGHT:</b>	20-1/2"
<b>WEIGHT:</b>	<b>DMX:</b> 280-LBS, SHIPPING INFO: 335-LBS, SIZE: 52" X 32" X 48" HIGH <b>DMX QUAD:</b> 335-LBS, SHIPPING INFO: 360-LBS, SIZE: 52" X 32" X 48" HIGH

### **DANIELS FOOD EQUIPMENT**

310 NORTH CLAYBORN AVE. PARKERS PRAIRIE, MN. 56361 PHONE: (218) 338-5000 FAX (218) 338-5909.

WEB: [www.danielsfood.com](http://www.danielsfood.com)

E-MAIL: [danielsfood@midwestinfo.net](mailto:danielsfood@midwestinfo.net)

7/4/2002